

GLOBAL ROTAX MAX Challenge Engine Specifications 2026

Bulletin no. : 02

Valid from : 2026 April 28

Addendum/changes to Global RMC Engine Specifications 2026

6.1 BALANCE DRIVE AND GEAR OIL

125 Micro MAX, 125 Mini MAX, 125 Junior MAX and 125 Senior MAX:

Steel balance gears only (**minimum width = 8,8 mm**) are legal to be used.

Balance gears must be installed and must be aligned according to the instruction in the repair manual.

A minimum volume of 50ml of gear oil must be able to be sampled at all times during the event.

XPS KART GEAR Oil must be used, changing of the gear oil for an alternative brand is not permitted.

The measured oil must be extracted by the competitor or representative via the port for this purpose in a maximum of 1 minute. It is the competitor's responsibility to capture all extracted oil in the provided container; any waste or spillage will not be counted as part of the measurement.

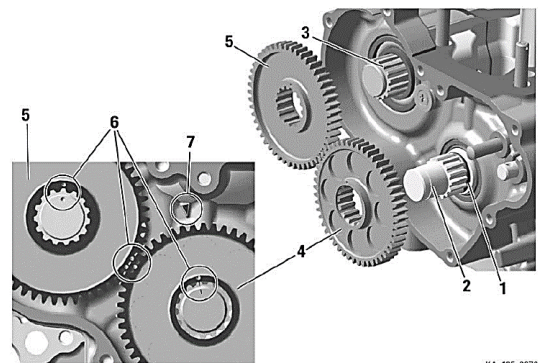
125 MAX DD2:

Balance drive gear must be fitted on crank shaft.

Balance gear must be fitted on primary shaft and must be aligned with the balance drive gear according to the instruction in the repair manual.

Version 1:

Fly weight of balance gear must show cast surface



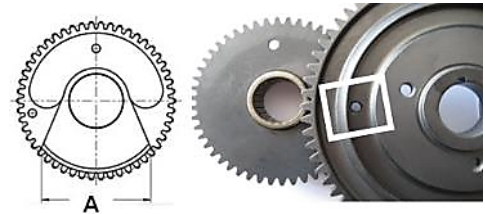
KA_125_5270



Version 2:

Fly weight of balance gear can show machined surface.

Dimension A (**widest part of balance weight**) must be either:



	Length	Tolerance
Dimension A	53,0 mm	+0,50 mm
		-0,50 mm
Dimension A	57,0 mm	+0,50 mm
		-0,50 mm

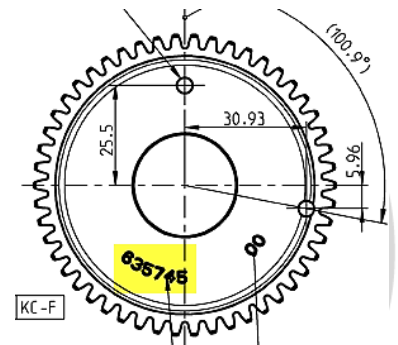
The minimum weight of a dry balance gear including bearing must not be lower than 240 grams.

Version 3:

ROTAX part number 635745 (**visible on the gear**).

Fly weight of balance gear can show machined surface.

The minimum weight of a dry balance gear including bearing must not be lower than 255,0 grams.



A minimum volume of 100ml of gear oil must be able to be sampled at all times during the event.

XPS DD2 KART GEAR Oil must be used, changing of the gear oil for an alternative brand is not permitted.

The measured oil must be extracted by the competitor or representative via the port for this purpose in a maximum of 1 minute. It is the competitor's responsibility to capture all extracted oil in the provided container; any waste or spillage will not be counted as part of the measurement.

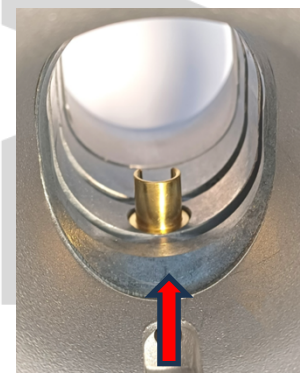
6.10 CARBURETTOR

Dellorto carburettor, housing must show the cast wording "**VHSB 34**".

Carburettor housing is stamped with "**XS**".

The lower entrance of the inlet bore of the carburettor must show a cast surface (See picture for reference, strictly no machining allowed in the area indicated by the red arrow).

Control machining maybe evident in and through the center of the venturi bore and on the edges of the venturi where it meets the cast body.



Optional item ROTAX part no. 261552 (main jet cup, 1pc.) are legal to be used. This part optionally replaces the part 261550.

6.4 GEAR SHIFTING (125 MAX DD2)

The 2-speed gearbox must be operated from the steering wheel via the original Rotax paddle shift system (see illustration).

Cutting the original aluminium shift paddles (30) or adding non-original parts is not permitted. The only exception is the addition of padding or protective covers to the paddles.

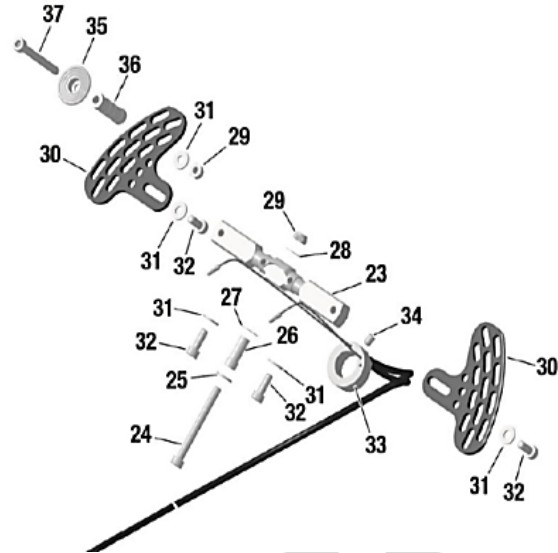
Mounting the shift paddles (30) on the bottom or top side of the whip (23) is an allowed adjustment.

Optional parts (35 - 37) can be mounted on the shift paddle (30) in any Position.

Bending the aluminium shift paddles to align them to the steering wheel is an allowed adjustment.

The whip (23) offers two connections for the cables (23) on each side for short travel or long travel. Both connections are legal to be used.

To change the connections of the cables to the whip (23) from left to right and right to left is an allowed adjustment.



ORIGINAL